

Product Datasheet



TYT60HE

4 Output

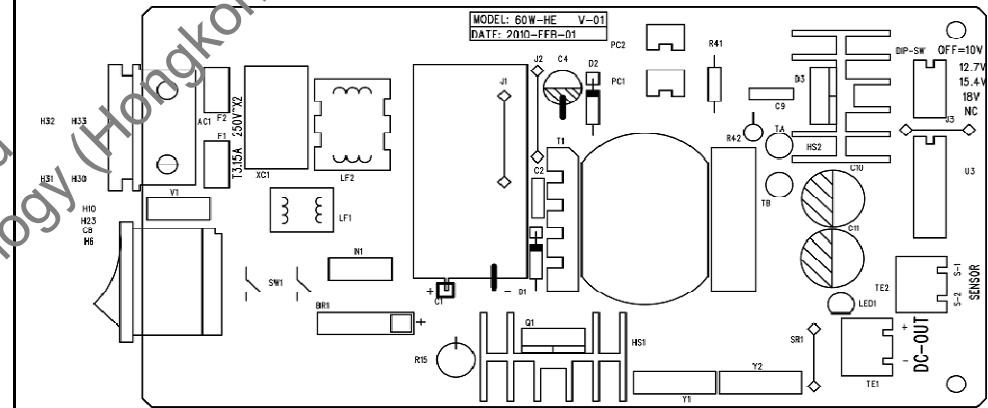
Open
Frame

Switching Power Supply

INPUT	VOLTAGE / FREQ.	100~240Vac/50/60Hz ±3Hz
	INPUT POWER	70W max.
	POWER CONSUMPTION (no load)	0.3W max.
OUTPUT	DC VOLTAGE CONDITIONS	As per table1
	RATED CURRENT (max OUTPUT)	As per table1
	LEAKAGE CURRENT	0.25mA
	RATED OUTPUT POWER	60W max.
	LINE REGULATION (in % of V_{in})	±5%
	RIPPLE AND NOISE <small>Note 1</small>	300Vp-p max.
	AVERAGE EFFICIENCY	≥87%
	TURN ON DELAY TIME	5s
	RISE TIME	5s%
	HOLD UP TIME	8mS min/
	DC-CORD AND PLUG or USB SOCKET	Not defined
	PROTECTION	OVER VOLTAGE PROTECTION
OVER CURRENT PROTECTION		LATCH type, data as per table 1
SHORT CIRCUIT PROTECTION		Sensor Window Voltage = 200mV Open = Shunt Down Min. Load = 0.2A Latch mode, power off and need 5s to restart
ENVIRONMENT	TEMPERATURE (working/storage)	0°C ~ +40°C / -20°C ~ +80°C
		EuP 2011 compliant
		RoH/SREACH compliant
		ENERGY STAR Level V
SAFETY &	meet EN60335-1 applied with casing	
EMC	meet EN55014-,EN61000-3-2/3	
MTBF	50K hours min. MIL-HDBK-217F(25°C)	
OTHERS		

TYPICAL APPLICATIONS: user defined
Output Conditions

Dip Switch Indicator	Output Voltage	Normal Load	OLP at full range 115/230Vac
4321	(V)	(W)	(A)
0000	10	18.5	1.9~2.1
0001	12.7	29.8	2.4~2.6
0011	15.4	43.9	2.95~3.15
0111	18	60.0	3.5~3.7



Dimension are advisory only. Appearance may vary. Alteration reserved without prior notice.

Product Code: TY100009 12.02.2010

